

MARS GAMING

MC316



TECHNOLOGY

ATX / Micro-ATX/ Mini-ITX

DRIVE BAYS

Exposed 1x5,25"

Internal 2 x 3,5" + 1x2.5"

VGA MAX

350 mm / 375mm (sin ventilador)

I/O PORTS

2xUSB2.0 + 1xUSB3.0 + HD Audio + Mic.

FANS

1x120mm

SUPPORTS

3x3.5" HDD and 1x2.5" HDD/SSD

product features

REFERENCE

MC316

EAN CODE

4713105962574

DIMENSIONS / WEIGHT

478 x 243 x 490mm / 3,3 Kg

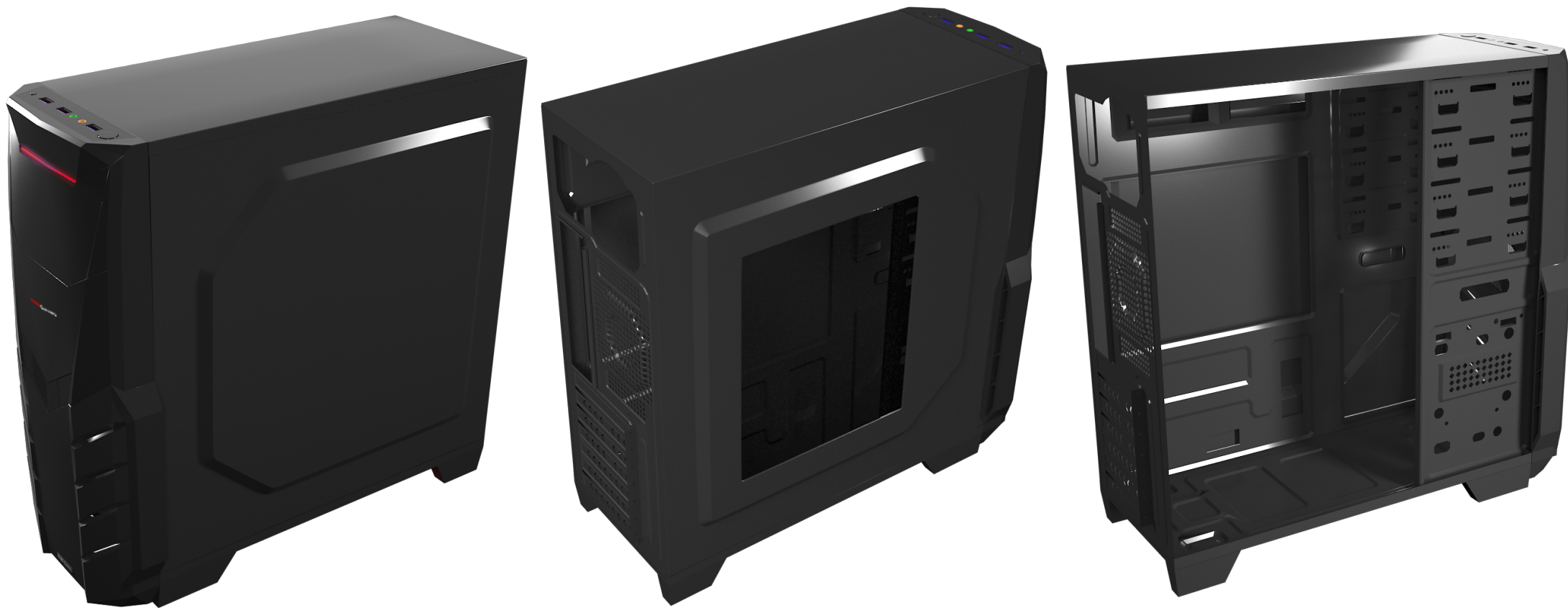
UNITS BOX/ UNITS PALET

1 Ud / 24 Units

logistics

MARS GAMING

MC316



WWW.MARSGAMING.EU