



# MC-GEO

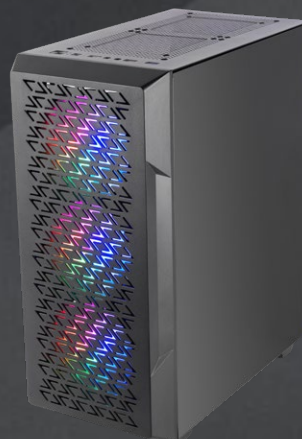
GAMING CASE

Midtower with ATX structure, tempered glass side window, geometrical MESH front panel design and 4x ultra-quiet 120mm FDB fans with FRGB lighting.

Liquid cooling support up to 360mm and capacity up to 6 fans. Dual chamber design and internal cable management system.

## SPECIFICATIONS

Type	Midtower
Design	Tempered glass side window and MESH front window
Motherboards	ATX / MicroATX / Mini-ITX
Fan	Front: 3x 120mm (included) / Top: 2x 120mm or 2x 140mm / Rear: 1x 120mm (included)
Liquid cooling	Front: +360mm, 240mm or 120mm / Rear: 120mm *radiators up to 397mm long
Drive bays	2 x 3.5" HDD / 2x 2.5" SSD
Expansion slots	7
VGA max length	325mm - +265mm (with liquid cooling radiator and fan installed in front)
VGA max width	147mm
CPU max.	157mm
I/O Ports	USB3.0 x1 / USB2.0 x2 / HD Audio + Mic
Extra	Dual camera design and internal cable management system
Dimensions	380x202x452mm / 3.85Kg





\*Compatible with VRM heatsinks up to 24mm \*\*Compatible with motherboards without a pre-installed I/O shield

REFERENCE	MCGEO	REFERENCE	MCGEOW	UNITS/BOX	1	LOGISTICS
EAN	8435693107965	EAN	8435693107972	PACKAGING	493x254x428mm	