

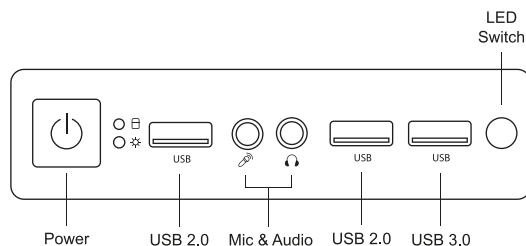
MC9

User's Manual
Manual de usuario
Handbuch

Manuel d'utilisation
Manuale utente
Manual do usuário

Instrukcja obsługi
Gebruikershandleiding
Руководство пользователя

I / O Panel



- **Switch OFF lighting:**
Hold LED switch for 10 secs to turn off LED
- **Lighting mode control:**
Switch between 58 lighting effects or addressable RGB motherboard control by pressing LED switch for 7 seconds

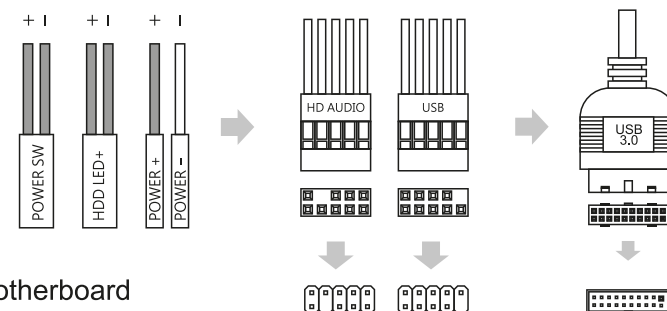
Accessory Bag Contents



Front I/O Panel Cable Connection

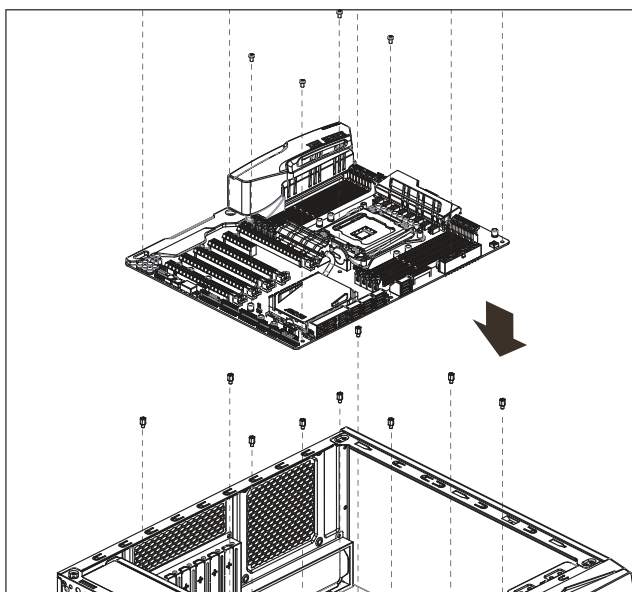
(Please refer to the motherboard's manual for further instructions).

Front Panel Connector



Motherboard

How to Install Guide



1 Motherboard

EN

Install Motherboard

ES

Instalación de la placa base

DE

Motherboard installieren

FR

Installer carte mère

IT

Installazione della scheda madre

PT

Instalar a placa principal

PL

Instalacja płyty głównej

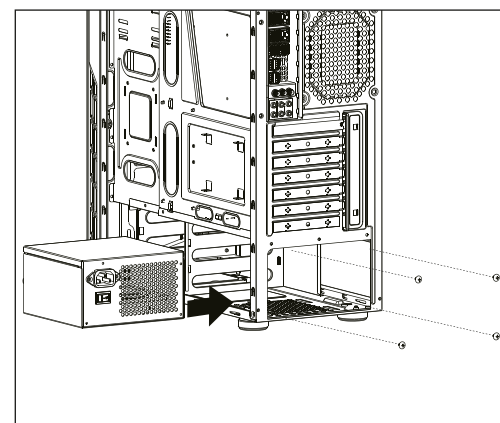
NL

Installeer het moederbord

RU

Установка материнской платы

2 PSU



PT

Instalar a fonte de alimentação

PL

Instalacja zasilacza

EN

Install PSU

ES

Instalación de Fuente

DE

Netzteil installieren

FR

Installer unité d'alimentation

IT

Installazione della PSU

NL

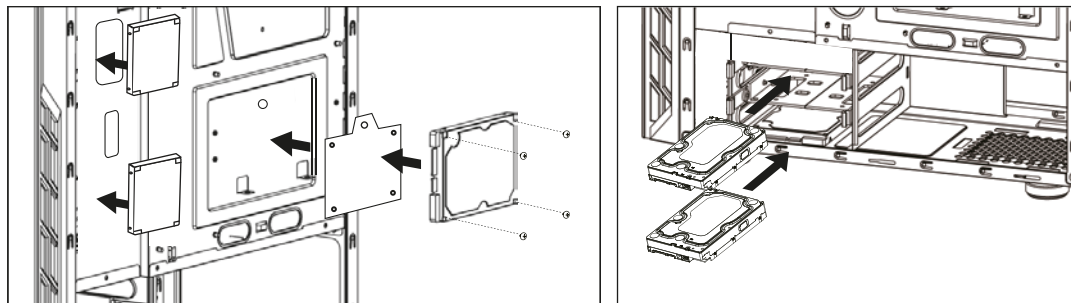
Installeer PSU

RU

Установка блока питания

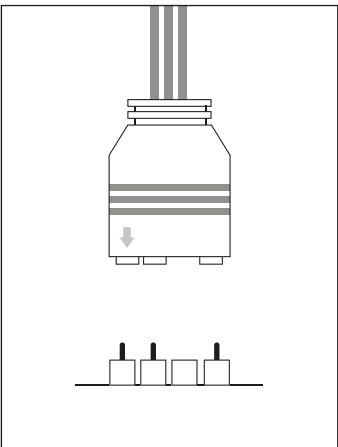
How to Install Guide

3 3.5" HDD x 2 / 2.5" SSD x 3



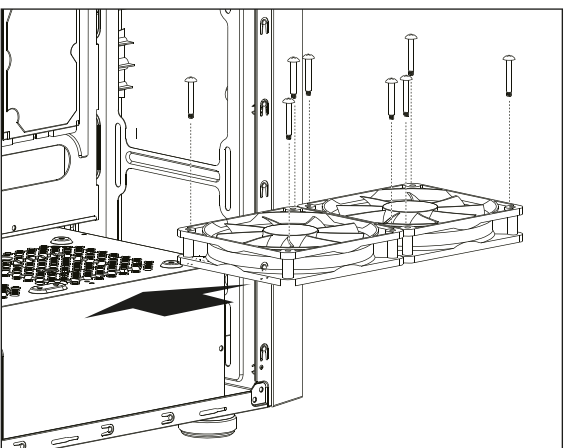
- EN**
Install 3.5" HDD
Install 2.5" SSD
- IT**
Installare l'unità HDD 3,5"
Installare l'unità SSD 2,5"
- PL**
Instalacja HDD 3,5"
Instalacja SSD 2,5"
- PT**
Instalar o HDD de 3,5"
Instalar o SSD 2,5"
- RU**
Установите 3,5
дюймовый жесткий диск
Установщик SSD 2.5"
- ES**
Instalación de 3.5" HDD
Instalación de 2.5" SSD
- FR**
Installer disque dur 3,5"
Installer SSD 2,5"
- NL**
Installeer 3,5 "HDD
Installeer SSD 2,5"
- DE**
3,5-Zoll-Festplatte installieren
2,5-Zoll-SSD installieren

5 ARGB motherboard connector



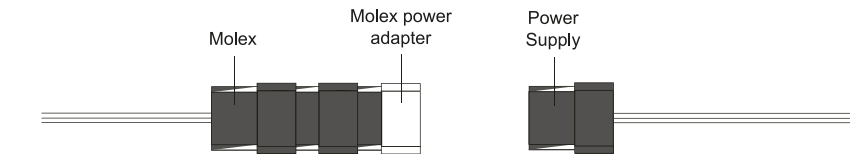
- EN**
Connect the ARGB 3-Pin
connector to the motherboard
- ES**
Conectar ARGB 3-Pin a la
placa base
- DE**
Verbinden Sie den 3-poligen
ARGB-Stecker mit dem
Motherboard
- FR**
Connectez le connecteur
ARGB à 3 broches à la carte
mère
- IT**
Collegare il connettore a 3
pin ARGB alla scheda madre
- PT**
Conecte o conector ARGB de 3
pinos à placa-mãe
- PL**
Podłącz 3-stykowe złącze ARGB
do płyty głównej
- NL**
Sluit de 3-pins ARGB-connector
aan op het moederbord
- RU**
Подключите 3-контактный
разъем ARGB к материнской
плате

4 120mm fans on cage



- PL**
Instalacja wentylatora
- NL**
Installatie van de ventilator
- RU**
Установка вентилятора
- EN**
Fan installation
- ES**
Instalación de ventilador
- DE**
Installation des Lüfters
- FR**
Installation du ventilateur
- IT**
Installazione della ventola
- PT**
Instalação do ventilador

6 FAN connection



- EN**
Connect the PSU to the MOLEX
- ES**
Conecta la PSU al MOLEX
- DE**
Schließen Sie PSU an das MOLEX
- FR**
Connectez le PSU à MOLEX
- IT**
Collega l'alimentatore a MOLEX
- PT**
Conecte a PSU ao MOLEX
- PL**
Podłącz zasilacz do MOLEX
- NL**
Sluit de PSU aan op de MOLEX
- RU**
Подключите БП к MOLEX